



MyLab<sup>TM</sup>Six

# Six

The Premium  
Choice



for affordable shared services

**e**saote





# Maximising user comfort and diagnostic confidence



Designed with exclusive ergonomics and ultrasound imaging features, MyLab™Six is the Premium Choice in its class.

Discover the system's performance and usability which is perfectly tailored for your daily clinical needs.





## 19-inch widescreen LCD

A powerful ultrasound engineering or an ergonomic probe design can certainly improve your work, but few things help you feel more productive. MyLab<sup>TM</sup>Six offers an unconventional 19-inch widescreen LCD, where clinical images and data are flawlessly displayed to increase users' comfort and to reduce eyestrain.

## Touchscreen technology

This system's touchscreen design delivers advantages such as greater speed, superior responsiveness and easy interface usage. MyLab<sup>TM</sup>Six provides a large and high resolution touch panel that promptly displays functions and commands precisely when you need them.

## Easy workflow

Improving workflow is an important process both for a dedicated use and for an interdisciplinary organization. An improved workflow maximizes efficiency while minimizing wasted time and resources. MyLab<sup>TM</sup>Six has been designed to supply a smooth workflow and full operator comfort from probe's features to cart's details.





# From application specific to fully shared services

## General Imaging and Women's Health

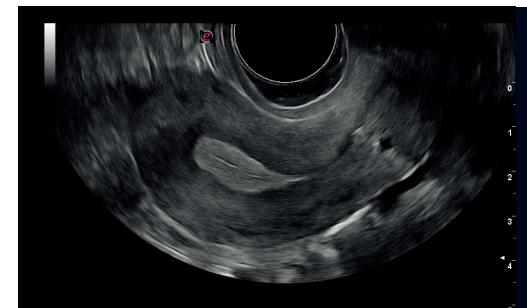
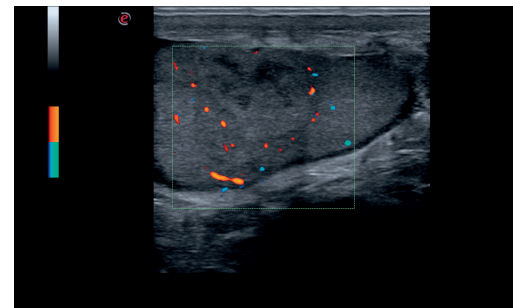
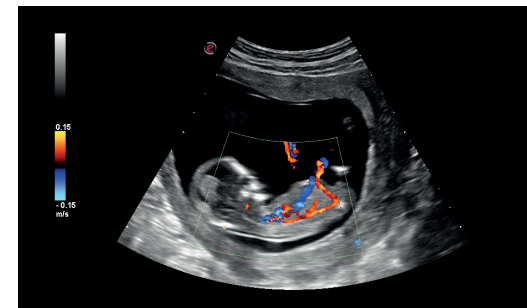
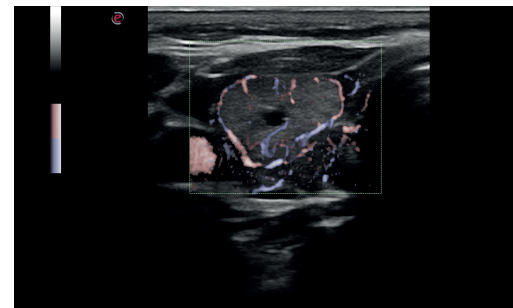
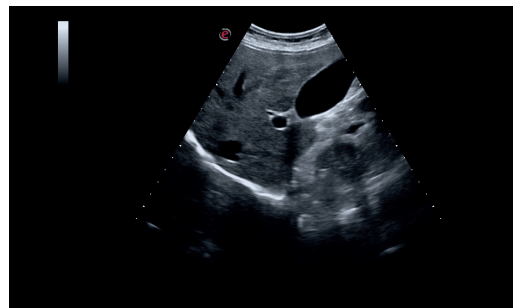
MyLab™Six integrates the latest Imaging Technologies such as Tissue Enhancement Imaging (TEI) and XView algorithm processing to provide you with exceptional high-resolution and artefact-free images.

An additional powerful technique, the MView (optional), allows to further enhance details to display enhanced borders and interface structures.

An ultra sensitive Colour & Power Doppler with Spectral waveform analysis is available to support vascular investigations. It also includes special advanced technologies such as X-Flow, to detect very low flows.

From abdomen, small parts and breast imaging to musculoskeletal, obstetrics and gynecologic applications, MyLab™Six offers a large choice of transducers (Bi- and Tri- Dimensional) to cover any kind of ultrasound investigation for General Imaging and Women's Healthcare.

The system provides DICOM connectivity (optional) and MyLab™Desk<sup>3</sup> comprehensive software suite for off-line post-processing and reporting.





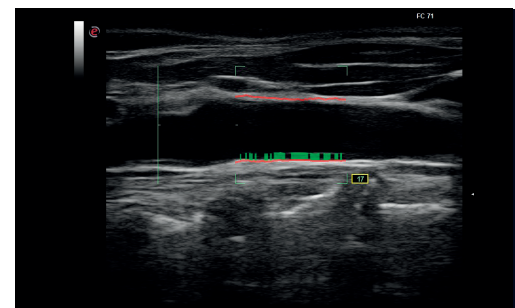
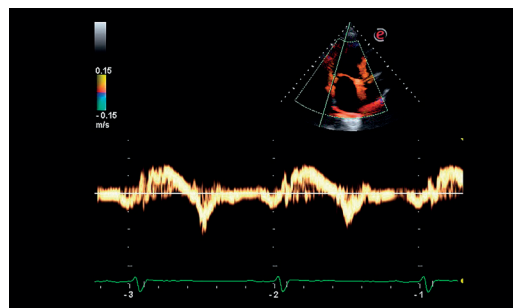
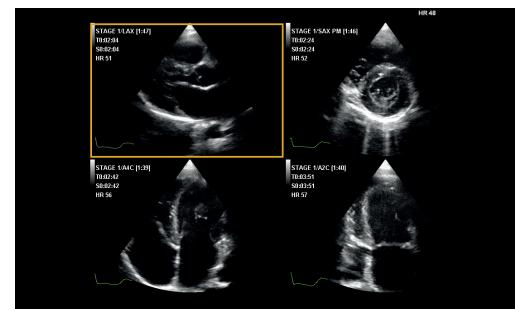


## Cardiology and Vascular

MyLab<sup>TM</sup>Six delivers an extraordinary cardiovascular ultrasound package, starting from fundamental 2D-M mode imaging (with TEI and XView Technologies) to top performing CFM, PW and CW Doppler, that properly manage any kind of required examination.

The measurements configurator allows users to add any new measurements to the default packages by defining their label, formulas and final report display. The innovative Compass M-Mode option allows up to multiple M-Mode lines, as well as TVM (Tissue Velocity Mapping) while the Stress Echo package provides a complete wall motion analysis for myocardial function evaluation.

As exclusive features for a system of this class which truly sets MyLab<sup>TM</sup>Six apart from all other systems is its capability to employ QIMT and XStrain\* (2D & 4D) advanced technologies, in addition to the optionally available transesophageal multi-plane transducer.



\* through MyLab<sup>TM</sup>Desk<sup>3</sup> software suite





# High on vision, Low on noise

Stay focused on your exam without being distracted by the sound of your ultrasound system.

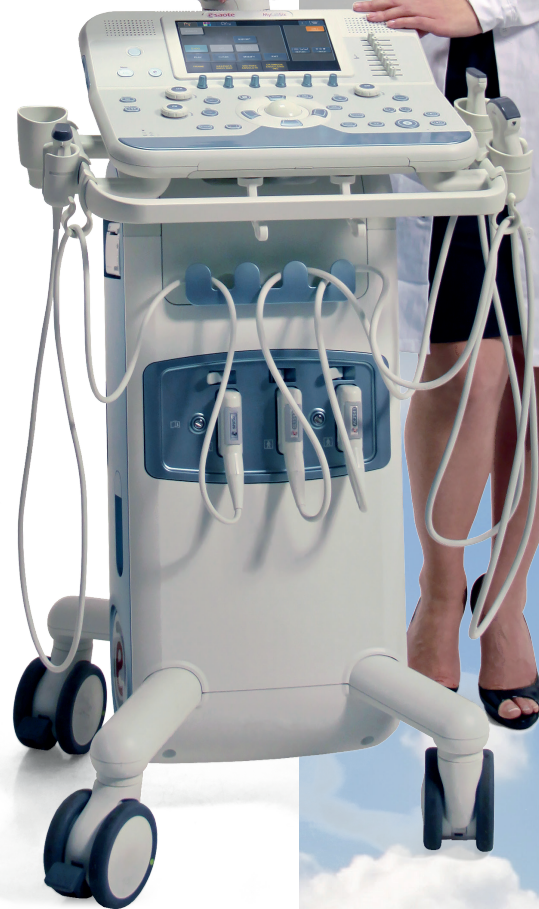
MyLab™Six is appreciated as an extreme silent scanner for utmost user comfort during the examination.

It leaves sonographers free to fully concentrate on patient and diagnosis.

## Ultra-low-power consumption

Experience a resilient system which makes careful use of resources by requiring less energy.

The core of MyLab™Six is green, providing a proficient long-lasting system for shared service applications which results in more efficient healthcare.



**e** **Product**  
**LESS** Energy Required  
**MORE** Efficient Healthcare



appleprobe

## Esaote's appleprobe

The innovative approach in ergonomics keeps hands and wrists in their natural alignment by distributing grip throughout the entire hand as when one grips an apple. You can relieve finger and the wrist tension when not scanning, by simply keeping the probe between your fingers.



Touchscreen technology



@Touch

## @Touch

Customized settings and multiple functions can be organized according to clinical preferences and then easily recalled by just pressing a button.



Articulated arm



Integrated BW printer

## Wireless connectivity

Being equipped with wireless connectivity, easy networking is just a click away.



Cable organizer



Storage Shelf

## Remote service

Your system will be recovered in the shortest time possible. Simply connect it to the network and Esaote's Service Team will easily troubleshoot any issues, perform proactive maintenance and monitor performance.







www.esaote.com



# MyLabSix

The Premium Choice  
for affordable shared services

16000025MAK Ver. 01



0344

### Esaote S.p.A.

Via di Caciolle, 15 50127 Florence, Italy, Tel. +39 055 4229 1, Fax +39 055 4229 208, international.sales@esaote.com  
Via A. Siffredi, 58 16153 Genoa, Italy, Tel. +39 010 6547 1, Fax +39 010 6547 275, info@esaote.com

**FRANCE**  
Esaote Medical SAS  
ZA du Bel Air  
10, rue de Témara, 78105 Saint-Germain-en-Laye  
Tel. +33 1 8204 8900, Fax +33 1 3061 7210  
info@esaote.fr

**GERMANY**  
Esaote Biomedica Deutschland GmbH  
Max-Planck-Straße 27a  
50858 Köln  
Tel. +49 2234 688 5600, Fax +49 2234 967 9628  
info@esaote.de

**SPAIN**  
Esaote España S.A.  
C/. Pont Reixat, 5  
08960 Sant Just Desvern, Barcelona  
Tel. +34 93 473 2090, Fax +34 93 473 2042  
info@esaote.es

**THE NETHERLANDS AND BELGIUM**  
Esaote Benelux B.V.  
Philipsweg 1  
6227 AJ Maastricht  
Tel. +31 43 3824650, Fax +31 43 3824651  
benelux@esaote.nl

**UK**  
Esaote UK  
14, Cambridge Science Park  
Milton Road, Cambridge, CB4 0FQ  
Tel. +44 1223 424499, Fax +44 709 288 0231  
infoUK@esaote.com

**NORTH AMERICA**  
Esaote North America  
8000 Castleway Drive,  
Indianapolis, IN 46250  
Tel. +1 317 813 6000, Fax +1 317 813 6600  
inquire@esaoteusa.com

**BRASIL**  
Brazilian Direct Office  
Rua Tomas Carvalhal, 711  
04006-001 São Paulo SP  
Tel. +55 11 2789 0400 Fax +55 11 2789 0432  
comercial@esaote.com.br

**ARGENTINA**  
Esaote Latinoamérica S.A.  
San Martín 551, Cuerpo 'C', Piso 8, (C1004AAK) Buenos Aires  
Tel. +54 11 4326 1832, Fax: +54 11 4328 1245  
info@esaote.com.ar

**INDIA**  
Esaote Asia Pacific Diagnostic Private Limited  
DLF IT Park, A - 44 & 45, Tower- C, Ground Floor,  
Sector- 62, Noida, Uttar Pradesh, India  
Pin Code: 201 301  
Tel. +91 120 4732444, Fax +91 120 4750148  
info@esaote.in

**HONG KONG AND FAR EAST**  
Esaote China Ltd  
18/F, 135 Bonham Strand Trade Centre,  
135 Bonham Strand, Sheung Wan, Hong Kong  
Tel. +852 2545 8386, Fax +852 2543 3068  
esaote@esaotechina.com

**CHINA**  
Esaote Shenzhen Medical Equipment  
Room 2608, Tower B  
Beijing Global Trade Center  
36 North Third Ring Road East,  
Dongcheng District, 100013, Beijing  
Tel. +86 010 58257766, Fax +86 010 52257760

**RUSSIAN FEDERATION AND CIS**  
Esaote S.p.A.  
18 Leningradsky prospekt  
Off. 5 and 6, Moscow 125040  
Tel. +7 495 232 0205, Fax +7 495 232 1833  
esaotemoscw@yandex.ru

Technology and features are system/configuration dependent.  
MyLab™Desk<sup>3</sup> SW only viewer is not intended or provided for an official diagnostic interpretation.  
Specifications subject to change without notice. Information might refer to products or modalities not yet approved in all countries.  
For further details, please contact your Esaote sales representative.

